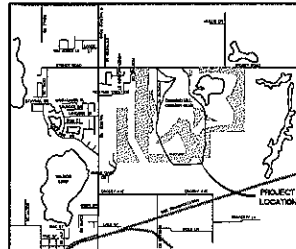
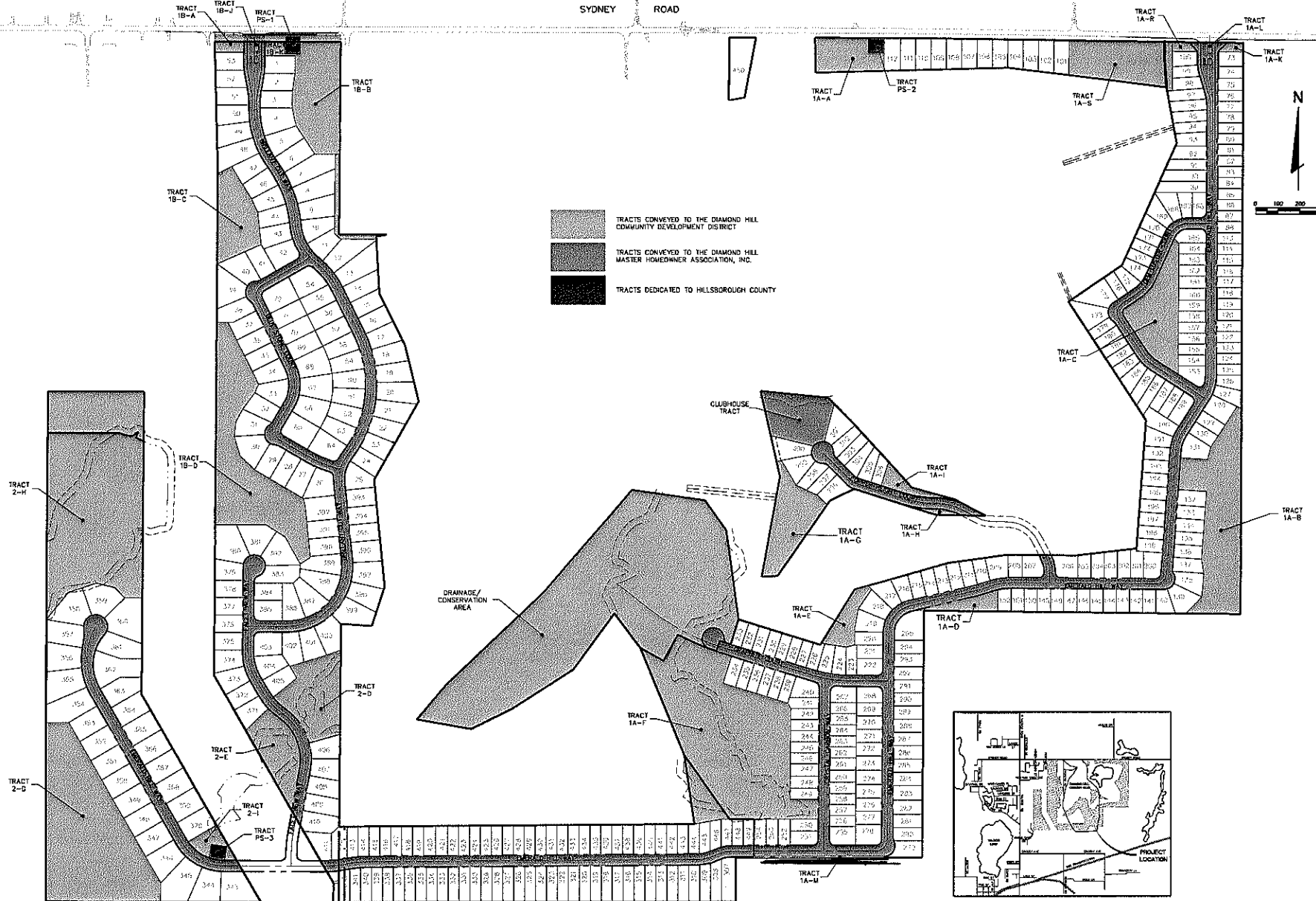


SYDNEY ROAD

SECTIONS 17 AND 18, TOWNSHIP 28E, RANGE 31E



- TRACTS CONVEYED TO THE DIAMOND HILL COMMUNITY DEVELOPMENT DISTRICT
- TRACTS CONVEYED TO THE DIAMOND HILL MASTER HOMEOWNER ASSOCIATION, INC.
- TRACTS DEDICATED TO HILLSBOROUGH COUNTY



DESIGNED BY	SC
CHECKED BY	JMS
DATE	SC
BY	EM

FLORIDA DESIGN CONSULTANTS, INC.
 ENGINEERS, ENVIRONMENTALISTS, SURVEYORS & PLANNERS
 3000 Sydney Blvd., New Port Richey, FL 34055
 Tel: (727) 842-7600 • Fax: (727) 848-5416

PREPARED FOR:
RYLAND HOMES
 255 PINE AVE. N.
 OLDSMAR, FL 34677
 MAIN PHONE: (813) 329-7600 FAX: 813-329-7669

SHEET DESCRIPTION:
**DIAMOND HILL SUBDIVISION
 DEDICATION PLAN**

DATE	10/05/04
SCALE	AS SHOWN
PROJECT NO.	50E-30
SHEET NO.	43
TOTAL SHEETS	47

© Copyright 2004 Florida Design Consultants, Inc. Drawings and computer files may not be used or reproduced without written permission.